



porter

porter

# BAS KET BALL

PORTERATHLETIC.COM

porter®



porter®



# SHOW THEM WHO OWNS THE COURT.

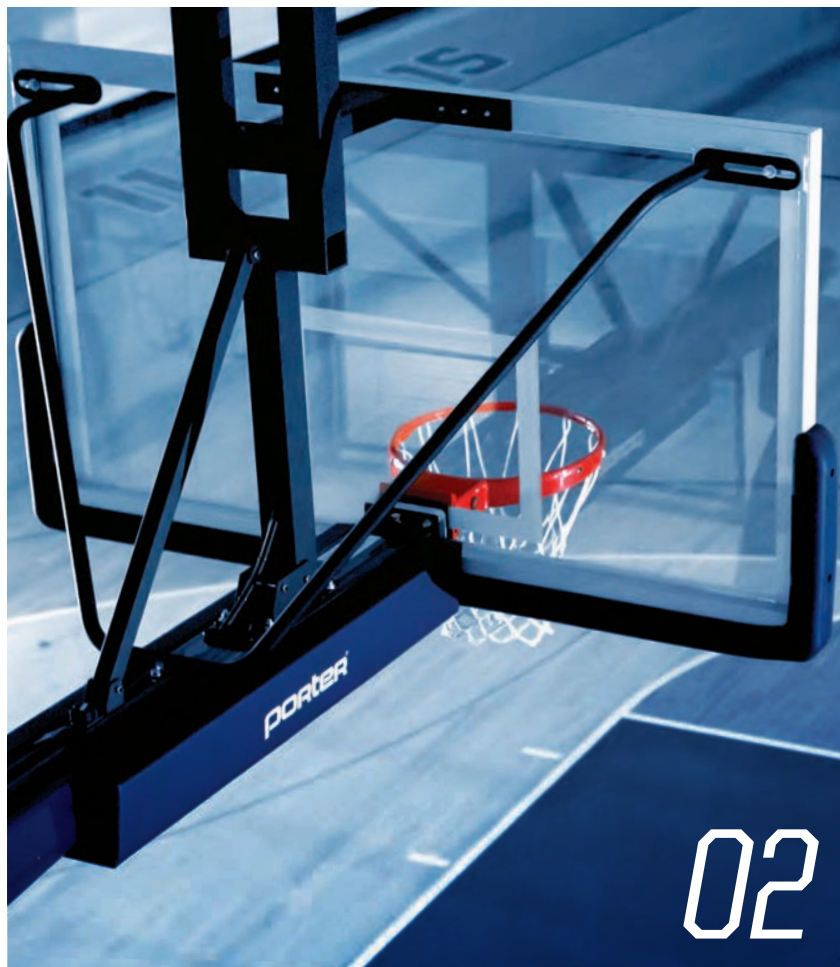
**GOALS / BACKBOARDS / PORTABLES / WALL PADS**

*For over 150 years, coaches have chosen Porter Athletic equipment for unsurpassed quality, service, and industry-leading features. Our equipment is designed with the safety and performance of athletes at the forefront. We care about your success, and work relentlessly to maintain your trust and confidence.*



# 2021 BASKETBALL

EQUIPMENT COLLECTION



- 02** *Portables & Accessories*
- 12** *Goals*
- 18** *Indoor Backboards*
- 20** *Backboard LEDs*
- 21** *Outdoor Backboards*
- 22** *Wall Mount Backstops*
- 24** *Accessories*
- 28** *Facility Equipment*
- 30** *Outdoor Fixed Systems*
- 34** *Outdoor Adj. Height Systems*
- 38** *Training & Conditioning*
- 42** *Specialty Pads*
- 44** *Wall Pads*

# THE STARTING LINEUP

Whether you're hosting conference championships or setting up extra shooting stations, Porter keeps your facility and budget in mind. From the arena-level 1835, to the high-performing and versatile 1135, to the thoughtfully designed 735 shooting station, Porter partners with you all season long to deliver a high-performance playing experience, smooth installation and set-up, and outstanding service and support. **Building a successful program starts with equipment you can trust.**



ALL PORTER  
BACKSTOPS ARE:



735



...COME WITH:



10 YEAR  
LIMITED WARRANTY

1135





## THREE POWERFUL PORTABLES





# 1835 PORTABLE BACKSTOPS

## MOTORIZED BACKSTOP OPTIONS

1835108MCXXYY	10'8" (3.25m) Extension	\$21,345 (ea)
1835080MCXXYY	8' (2.44m) Extension	\$20,950 (ea)

## MANUAL BACKSTOP OPTIONS

1835108CXXYY	10'8" (3.25m) Extension	\$19,045 (ea)
1835080CXXYY	8' (2.44m) Extension	\$18,460 (ea)

## CUSTOMIZE

1834CXX	Boom Pad	\$221
183830	Mast Mount Shot Clock Support	\$814
183850	Platform Mount Shot Clock Support	\$889
183860	Rear Shot Clock Support	\$394
Page 20	Perimeter Backboard Lights	
Page 11	Replacement Pads	
Page 11	Graphic Pad Set	
FITG00430	Floor Anchor Extension Bracket	\$376
	See Page 10	



Each Portable Unit Includes:



Center-Strut  
Glass Backboard



Pro-Pad Bolt-On  
Backboard Padding



TFX Goal  
with Anti-Whip Net



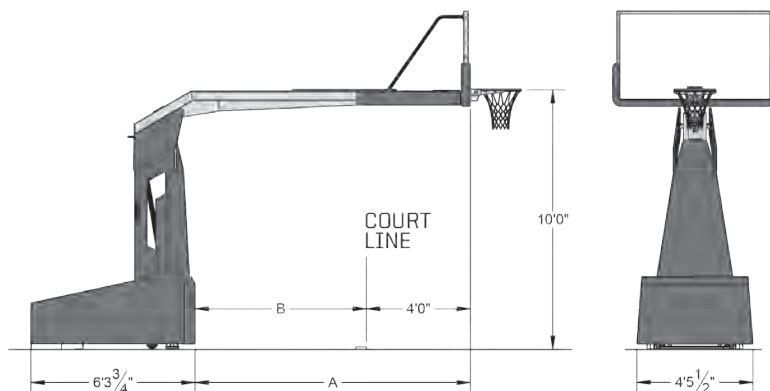
Exclusive Self-Docking Anchor Trays  
(Patent No. 10,238,944)



Floor Anchors

## 1835 Dimensions

	1835108	1835080
A	10'8"	8'
B	6'8"	4'
IN STORAGE		
(H)	7'3"	7'1"
(L)	15'1"	13'10"
(W)	6'4"	6'4"



Vinyl Colors: (xx)

01 LIGHT BLUE	02 ROYAL BLUE	03 RED	04 WHITE	05 ORANGE	06 YELLOW GOLD	08 TAN
09 GRAY	10 MAROON	11 PURPLE	12 BLACK	13 NAVY BLUE	14 KELLY GREEN	15 DARK GREEN

Powder Coat Colors: (yy)

01 LIGHT BLUE	02 ROYAL BLUE	03 RED	04 WHITE	05 ORANGE	06 YELLOW GOLD	07 SILVER	08 OLD GOLD
09 GRAY	10 MAROON	11 PURPLE	12 BLACK	13 NAVY BLUE	14 KELLY GREEN	15 DARK GREEN	





Portable Shown With Optional Shot Clock Support



CUSTOM GRAPHICS  
AVAILABLE



## 1835 SERIES

Satisfy the highest levels of competition and performance with the new arena-level portable from Porter, and eliminate the universal pains previously experienced with portable backstops.

The 1835 portable offers breakthroughs in the installation and setup process. Porter's exclusive self-docking tray anchor system (Patent No. 10,238,944) allows perfect alignment into a secured game position, eliminating hassles. Special locator pins provide additional control and user support during the setup process. Once positioned, the 1835 portable offers effortless spring-assisted setup for play.

Meticulously crafted protective pads integrate perfectly around the base and stanchion of the portable to enhance facility appearance. Choose from a full-range of vinyl pad colors and vibrant powder coat frame colors to complete your portable design. Optional full-color protective pad graphics offer even greater customization options.

 **10** YEAR LIMITED WARRANTY



meets requirements for  
**NCAA NFHS**



- **EXCLUSIVE SELF-DOCKING ANCHOR TRAY**  
(Patent No. 10,238,944)
- **AUTO-RETRACTABLE FOOT PAD**
- **DROP PIN LOCATING SYSTEM**
- **INTEGRATED PLUMBING AND LEVELING**
- **4" THICK FRONT PADDING**
- **AVAILABLE IN 8' AND 10'8" EXTENSIONS**
- **ADJUSTABLE TO 8',9', AND 10' GOAL HEIGHTS**



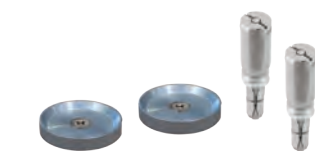
# 1135 PORTABLE BACKSTOPS

## BACKSTOP OPTIONS

1135080CXXYY Manual 8' (2.44m) Extension \$12,845 (ea)

### CUSTOMIZE

1134CXX Boom Pad \$221  
 113130 Mast Mount Shot Clock Support \$889  
 113150 Platform Mount Shot Clock Support \$889  
 See page 20 Perimeter Backboard Lights  
 See page 11 Replacement Pads  
 See page 11 Graphic Pad Set  
 FITG00300 Locator Cup Kit \$502



+ Locator Cup Kit (Optional)



Each Portable Unit Includes:



Center-Strut  
Glass Backboard



Pro-Pad Bolt-On  
Backboard Padding



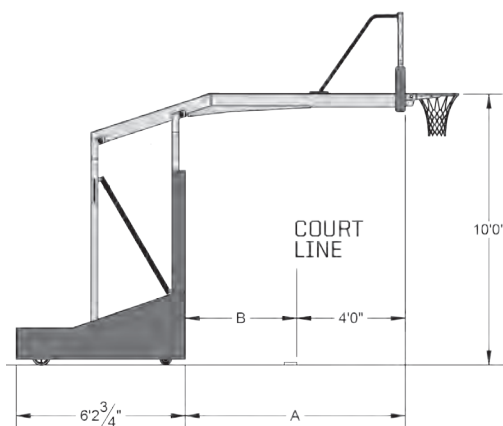
Torq-Flex Competition Goal  
with Anti-Whip Net



Floor Anchors

### 1135 Dimensions

1135080	
A	8'
B	4'
IN STORAGE	
(H)	6'8"
(L)	13'7"
(W)	6'4"



Vinyl Colors: (xx)

01 LIGHT BLUE	02 ROYAL BLUE	03 RED	04 WHITE	05 ORANGE	06 YELLOW GOLD	08 TAN
09 GRAY	10 MAROON	11 PURPLE	12 BLACK	13 NAVY BLUE	14 KELLY GREEN	15 DARK GREEN

Powder Coat Colors: (yy)

01 LIGHT BLUE	02 ROYAL BLUE	03 RED	04 WHITE	05 ORANGE	06 YELLOW GOLD	07 SILVER	08 OLD GOLD
09 GRAY	10 MAROON	11 PURPLE	12 BLACK	13 NAVY BLUE	14 KELLY GREEN	15 DARK GREEN	





Portable Shown With Optional Shot Clock Support



CUSTOM GRAPHICS  
AVAILABLE



## 1135 SERIES

This versatile portable backstop combines high-level play capability with simplified storage and maneuvering capabilities.

We are proud to include the 1135 in our Porter Athletic Portable lineup. The 1135 unit is a spring assisted, folding portable that provides extra stability and meets all competition needs.

The 1135 is anchored and secured with two heavy duty threaded rods that screw into specially designed floor anchors. Two leveling feet in the front of the unit allow for precision adjustment of the height setting and provide stability for the unit. The 1135 features Porter's Center-Strut direct goal attachment, allowing for easy goal and backboard installation. The direct goal-mount system also withstands slam-dunk action and prevents glass backboards from shattering. This portable is more easily stored and maneuvered than traditional arena competition portables. The 1135 is guided by two rigid, dual-wheel casters and two swivel casters.

- CENTER-STRUT ATTACHMENT
- THREADED KNOB TIE-DOWN SYSTEM
- SCREW-TYPE LEVELING JACKS
- 6 NON-MARKING RUBBER CASTER WHEELS
- 2" THICK FRONT PADDING (7' TALL)
- ADJUSTABLE TO 8', 9', AND 10' GOAL HEIGHTS

 **10** YEAR LIMITED WARRANTY



meets requirements for  
**NCAA NFHS**

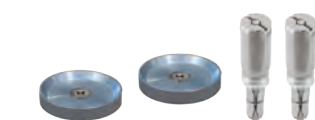
# 735 PORTABLE BACKSTOPS

## BACKSTOP OPTIONS

735050CXXYY Manual 5' (1.52m) Extension \$10,610 (ea)

### CUSTOMIZE

007375 Shot Clock Support \$708  
 See page 20  
 See page 11  
 See page 11  
 FITG00300 Perimeter Backboard Lights  
 FITG0047X Replacement Pads  
 Graphic Pad Set  
 Locator Cup Kit \$502  
 Floor Anchor Kit Options Contact Porter



+ Locator Cup Kit (Optional)



Each Portable Unit Includes:



Center - Strut Glass Backboard



Pro-Pad Bolt-On Backboard Padding



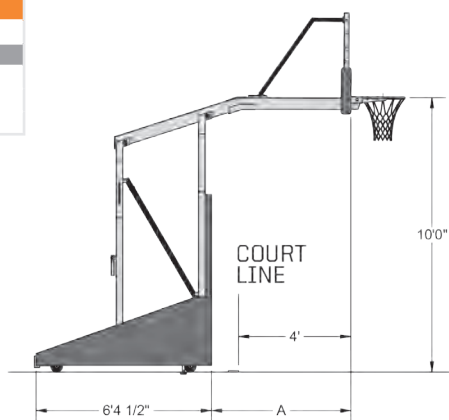
Ultra-Breakaway Competition Goal with Anti-Whip Net



+ Floor Anchor Kit (Optional)

## 735 Dimensions

	735050
A	5'
STORAGE	
(H)	6'7"
(L)	11'10"
(W)	6'4"



### Vinyl Colors: (xx)

01 LIGHT BLUE	02 ROYAL BLUE	03 RED	04 WHITE	05 ORANGE
06 YELLOW GOLD	08 TAN	09 GRAY	10 MAROON	11 PURPLE
12 BLACK	13 NAVY BLUE	14 KELLY GREEN	15 DARK GREEN	

### Powder Coat Colors: (yy)

01 LIGHT BLUE	02 ROYAL BLUE	03 RED	04 WHITE	05 ORANGE
06 YELLOW GOLD	07 SILVER	08 OLD GOLD	09 GRAY	10 MAROON
11 PURPLE	12 BLACK	13 NAVY BLUE	14 KELLY GREEN	15 DARK GREEN





Portable Shown With Optional Shot Clock Support



CUSTOM GRAPHICS  
AVAILABLE

## 735 SERIES

New-and-improved design features make this portable a top choice for both competitive team practices and recreational play.

A unique tension spring assist folding mechanism concealed in the base provides instant and effortless height adjustments from storage position to 8' 9" or 10' goal heights. An improved anchoring method includes one tie-down threaded anchor at the rear position and two screw-type level jacks in the front for simplified setup. Updated frame and boom construction provides maximum durability.

Porter's Center-Strut direct goal-mount system withstands slam dunking and prevents glass backboards from shattering.

- SPRING OPERATED
- SCREW-TYPE LEVELING JACKS
- THREADED KNOB TIE-DOWN SYSTEM
- UPDATED FRAME AND BOOM
- 2" THICK FRONT PADDING
- 4 NON-MARKING SWIVEL CASTER WHEELS
- ADJUSTABLE TO 8', 9', AND 10' GOAL HEIGHTS

 **10** YEAR LIMITED WARRANTY



# PORTABLE ACCESSORIES



## 1835 Floor Anchor Extension Bracket

Optional tie down bracket recommended for portable floor with less than 4' from the edge of the floor to the rear of the portable. Includes bracket, chain, and anchor.

FITG00430

\$376



## Floating Floor Type Anchor

Two part system to allow movement and expansion of wood floor where flooring does not exceed 3 7/8" total thickness. Anchor installs after finished floor is in place by means of a double acting masonry anchor. 5" chrome or brass plated cover assembly consists of molded plastic recessed mounting flange, cork gasket and swivel type retainer pin. Specify extended shaft handwheel for use on floor mounted equipment.

00249000	Anchor w/ Chrome Cover	\$221
00249200	Anchor w/ Brass Cover	\$221
HAND00001000	Handwheel w/Stud 1/2"-3 1/2"	\$44
HAND000027000	Handwheel w/Stud 1/2"-2 1/4"	\$26
HAND000067000	Handwheel w/Stud 1/2"-3 3/4"	\$17

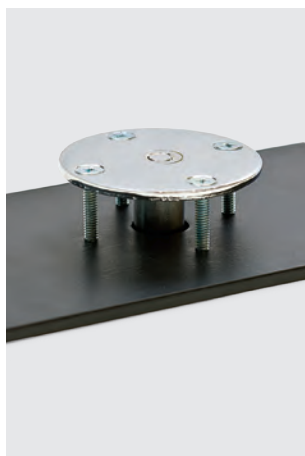


## Sleeper Anchor

Designed for use in sleeper floors where anchorage into both concrete slab and wood floor is desirable. Top plate is 3 1/2" diameter and is threaded to provide adjustment to floor surface.

00244000

\$162



## Portable Floor Type Anchor

Designed specifically for installation on a professional type portable wood flooring system. Anchor is identical to the 3 1/2" diameter chrome plated top plate assembly as used on the No. 00242100 floor anchor with the addition of flat head machine screws and a heavy steel reinforcing plate which is mounted under the portable floor panels to properly distribute loading on the wood sections.

00242900

\$182



## Expansion Anchor

The industry's favorite. Ideal where there is at least 6" of concrete. Expansion shield provides super holding power. Anchor is 1 1/2" diameter minimizing metal surface on gym floor. Top portion of anchor may be removed for cleaning and washers may be added or removed to keep surface of anchor flush with floor.

00247100

\$162



## Thin Concrete Anchor

Designed for maximum holding power through thin channel lock wood or synthetic floors into concrete sub-floors of minimal thickness. Four double acting expansion anchors provide an ultimate pull-out load of 8,200 pounds when properly installed. Top plate is 3 1/2" diameter and is polished and chrome plated.

00242100

\$122



# CUSTOM GRAPHICS



Give your school or facility a true home team advantage with custom printed graphics on your portable backstop!

Simply provide your logo artwork and our design team works with you to create a stunning display. With a state-of-the-art printing process and proper artwork our printer can print nearly any design!

Custom Graphics    Add **SP** to end of portable item #    \$335 - \$370



LOOK FOR  
THIS ICON

Visit [PorterAthletic.com](http://PorterAthletic.com)  
to find your replacement parts.

# TRX

## **180° BREAKAWAY & FLEX GOAL**







## TFX GOAL

Designed for premier facilities who experience a volume of top-level talent. The Porter TFX Goal absorbs the impact from all directions reducing the shock into a player's hands. Typical arena rims have the ability to only either flex or breakaway. The TFX combines both technologies to provide desired flexibility that is within NBA rules and requirements.

280180

\$827

- 180 DEGREE BREAKAWAY & FLEX GOAL
- BREAKAWAY RELEASE ADJUSTABLE FROM 180-250 LBS
- 5" x 4" TO 5" x 4 1/2" MOUNT PATTERN
- RING CONSTRUCTED WITH 5/8" ALLOY STEEL
- INCLUDES NET & MOUNTING HARDWARE
- TUBE TIE NET ATTACHMENT

 **7** YEAR LIMITED WARRANTY



meets requirements for  
**NCAA NFHS**



# TORQFLEX<sup>®</sup>

## ELITE



### Torq-Flex<sup>®</sup> Elite Goal

Designed for premier facilities that experience a volume of top-level talent. Porter's Torq-Flex Elite Goal reduces the impact into a player's hand from all directions. Unlike standard flex goals, Torq-Flex Elite flexes on all sides of the rim providing equal flexibility regardless of the approach.

**260180**

**\$718**

- ✓ 180 Degree Flex Goal
- ✓ 5" x 4" to 5" x 4½" Mount Pattern
- ✓ Ring Constructed With ⅝" Alloy Steel
- ✓ Includes Net & Mounting Hardware
- ✓ Tube Tie Net Attachment



**7** YEAR LIMITED WARRANTY



meets requirements for  
**NCAA NFHS**



# TORQFLEX<sup>®</sup>

## COMPETITION



### Torq-Flex<sup>®</sup> Competition Goal

Robust design with 180 degree flex that is perfect for competition play in high school, college, and recreational facilities.

**240180**

**\$349**

- ✓ 180 Degree Flex Goal
- ✓ 5" x 4" to 5" x 4½" Mount Pattern
- ✓ Includes Net & Mounting Hardware
- ✓ Tube Tie Net Attachment



**5** YEAR LIMITED WARRANTY



meets requirements for  
**NCAA NFHS**



# POWRFLEX

## ELITE



### Powr-Flex Elite Goal

Exceptional strength and performance are achieved by the unique concealed shock absorber mechanism.

Goal Centers 5" x 4" to 5" x 4½"

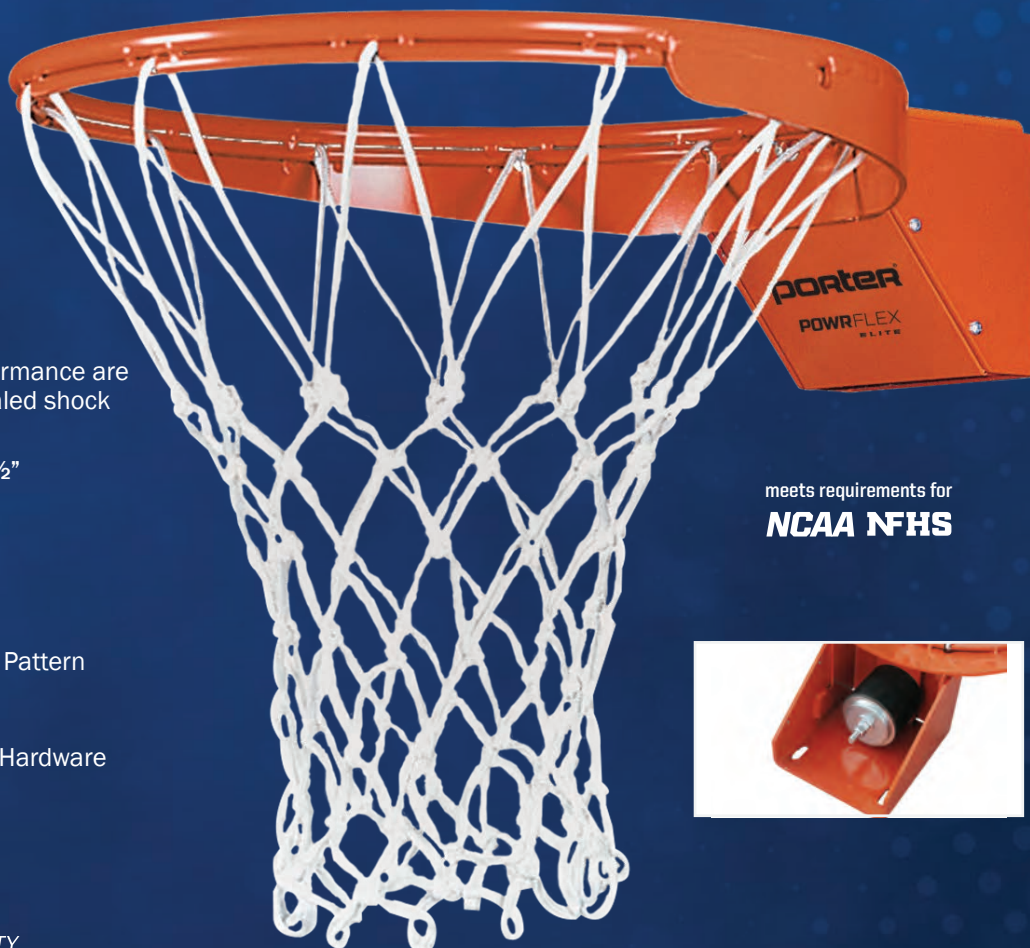
**22302** \$428

Goal Centers 5" x 5"

**23302** \$428

- ✓ Flex Goal
- ✓ 5" x 4" to 5" x 4½" Mount Pattern
- ✓ 5" x 5" Mount Pattern
- ✓ Includes Net & Mounting Hardware
- ✓ Tube Tie Net Attachment

 **5** YEAR LIMITED WARRANTY



meets requirements for  
**NCAA NFHS**



# POWRFLEX

## COMPETITION



### Powr-Flex Competition Goal

An economical competition flex goal

Goal Centers 5" x 4" to 5" x 4½"

**236154** \$214

Goal Centers 5" x 5"

**236H00** \$214

- ✓ 5" x 4" to 5" x 4½" Mount Pattern
- ✓ 5" x 5" Mount Pattern
- ✓ Includes Net & Mounting Hardware
- ✓ Tube Tie Net Attachment

 **5** YEAR LIMITED WARRANTY



meets requirements for  
**NCAA NFHS**

# ULTRA BREAKAWAY ELITE



## Ultra Breakaway Elite Goal

A premier breakaway goal designed with a positive lock mechanism that releases with a 180 lb. static load.

Goal Centers 5" x 4" to 5" x 4½"

00245500 \$545

Goal Centers 5" x 5" (Outdoor)

00245600 \$545

- ✓ Breakaway Goal
- ✓ 5" x 4" to 5" x 4½" Mount Pattern
- ✓ 5" x 5" Mount Pattern
- ✓ Includes Net & Mounting Hardware
- ✓ Tube Tie Net Attachment



5 YEAR LIMITED WARRANTY



meets requirements for  
**NCAA NFHS**



## ULTRA BREAKAWAY COMPETITION



## Ultra Breakaway Competition Goal

A true breakaway goal designed with a positive lock mechanism that releases with a 180 lb. static load

236054

\$232

- ✓ Breakaway Goal
- ✓ 5" x 4" to 5" x 4½" Mount Pattern
- ✓ Includes Net & Mounting Hardware
- ✓ Tube Tie Net Attachment



5 YEAR LIMITED WARRANTY



meets requirements for  
**NCAA NFHS**





## Heavy-Duty Playground Goal

This indestructible goal is the most rugged outdoor goal available with solid double  $\frac{5}{8}$ " diameter rim design.

00251H00

\$175

- ✓ 5" x 5" Mount Pattern
- ✓ Includes Net & Mounting Hardware



**UNCONDITIONAL** LIFETIME WARRANTY



## Double Rim Playground Goal

Heavy-duty, double rim construction makes this front-mount goal withstand rugged playground use.

00202H00

\$127

- ✓ 5" x 5" Mount Pattern
- ✓ Includes Net & Mounting Hardware



**1** YEAR LIMITED WARRANTY



## Super Goal

Heavy-duty regulation front-mount goal has extra high-tensile strength steel and rugged  $\frac{5}{8}$ " diagonal support bracing.

Goal Centers 5" x 4" to 5" x 4½"

00225000

\$81

Goal Centers 5" x 5"

00235000

\$81

- ✓ 5" x 4" to 5" x 4½" Mount Pattern
- ✓ 5" x 5" Mount Pattern
- ✓ Includes Net & Mounting Hardware



**1** YEAR LIMITED WARRANTY



## Rear Mount Goal



Heavy-duty, rear-mount goal with welded support brace makes this the top replacement goal for old style fan steel banks.

Goal Centers 3½" x 3"

00210000

\$269

- ✓ Includes Net & Mounting Hardware



**1** YEAR LIMITED WARRANTY



## Championship Goal



Intended for residential use only, not for use on school/public playgrounds. Fits Championship/ U-Can-Slam residential systems.

Goal Centers 3" x 4"

09143000

\$186

- ✓ Includes Net & Mounting Hardware



**1** YEAR LIMITED WARRANTY



# INDOOR BACKBOARDS



Center - Strut Glass Backboard



236154 Powr-Flex Competition Goal



Pro-Pad Bolt-On Backboard Pad

## Center-Strut Rectangular Glass Backboard

This official size 72" x 42" backboard with three point attachment support frame is designed for use only on direct goal mount (Center-Strut) support structures. Brushed aluminum extrusions secure ½" thick fully tempered glass to the unitized steel frame. Official white border and target area are fired into the glass. Limited lifetime warranty when installed on Porter Center-Strut support systems. Backboard padding is not included but is recommended for player safety. Goal mount centers 5" x 4½".

 **LIFETIME** LIMITED WARRANTY

208	72" x 42" Backboard	\$866
208L1	72" x 42" Backboard with LEDs	\$1,170
+		
20810CXX	Center-Strut Package	\$1,400

INCLUDED: Backboard, 236154 Powr-Flex Competition Goal, Pro-Pad Backboard Pad





## Pro-Strut Rectangular Glass Backboard

72" x 42" or 72" x 48" backboard includes a vertical Center-Strut goal support and four corner attachment support frame. This design allows installation on wall-mount units, double drop overhead supported units or old style support system. Brushed aluminum extrusions secure ½" thick fully tempered glass to the unitized steel frame. Official white border and target area are fired into the glass. Limited lifetime warranty. Backboard padding is not included but is recommended for player safety. Goal mount centers 5" x 4½".



**LIFETIME** LIMITED WARRANTY

<b>204</b>	<b>72" x 42" Backboard</b>	<b>\$892</b>
<b>204L1</b>	<b>72" x 42" Backboard with LEDs</b>	<b>\$1,255</b>
<b>206</b>	<b>72" x 48" Backboard</b>	<b>\$1,005</b>
<i>(5" x 5" Goal Mount Centers)</i>		

<b>20410CXX</b>	<b>Pro-Strut Package</b>	<b>\$1,425</b>
-----------------	--------------------------	----------------

*INCLUDED: Backboard, 236154 Powr-Flex Competition Goal, Pro-Pad Backboard Pad*



## Pro-Strut Conversion Glass Backboard

No additional support structure or hardware is needed to replace a standard fan shaped backboard with this official size 72" x 42" rectangular glass backboard. The two vertical struts with fan shaped backboard mounting centers include all the necessary hardware. Brushed aluminum extrusions secure ½" thick fully tempered glass to the unitized steel frame. Official white border and target area are fired into the glass. Limited lifetime warranty. Goal mount centers 5" x 4½" and 5" x 5". Backboard padding is not included but is recommended for player safety.

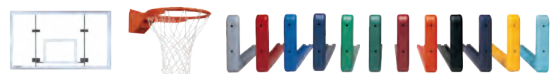


**LIFETIME** LIMITED WARRANTY

<b>205A</b>	<b>72" x 42" Backboard</b>	<b>\$892</b>
<b>2045439</b>	<b>54" x 39" Backboard</b>	<b>\$638</b>

<b>205A10CXX</b>	<b>Pro-Strut Package</b>	<b>\$1,425</b>
------------------	--------------------------	----------------

*INCLUDED: Backboard, 236154 Powr-Flex Competition Goal, Pro-Pad Backboard Pad*



# BACKBOARD LED KITS



## LED Perimeter Lights

LED lights comply with the latest NBA, NCAA, and FIBA recommendations and meet NFHS end of period light requirements. Lights are neatly contained within a custom aluminum extrusion and mount directly inside the perimeter backboard markings providing a clean, uncluttered appearance. Order one set per backboard.



## For Use With Center-Strut Backboard

820801	LED light set with synchronizer	\$823
820802	LED light set with Daktronics cord	\$464
820803	LED light set with Nevco cord	\$464

## For Use With Pro-Strut Backboard

820401	LED light set with synchronizer	\$823
820402	LED light set with Daktronics cord	\$464
820403	LED light set with Nevco cord	\$464



As the only gymnasium equipment provider on contract with Sourcewell (formerly NJPA), you can count on Porter to offer outstanding options for all your gymnasium equipment needs. For over 100 years, the game's been played on Porter, and now it's easier than ever to make a purchase.

Sourcewell (formerly NJPA) create national cooperative contract purchasing opportunities and solutions on behalf of its members which include all government, education and non-profit agencies nationwide. These cooperative contract purchasing opportunities present both time and money savings for users.



# OUTDOOR BACKBOARDS



## Fiberglass Backboards

The 54" x 39" fan or official size 72" x 42" rectangular backboards are molded from fiberglass. Perimeter flange and structural rib pattern are 1½" deep for rigidity and superior rebound qualities. Official perimeter and target area are screened. Threaded inserts on fan backboard mounting centers allow mounting on any standard support structure. Additional holes are provided for attachment to Center-Strut support system. Goal mount centers 5" x 4½" to 5" x 5". Backboard padding is not included but is recommended for player safety.

216	Rectangle Board	\$764
267	Fan Board	\$440



## Aluminum Backboards

This 54" x 39" backboard is made from cast aluminum with continuous reinforcing ribs on the backside. Perimeter flange and ribs are 1 ¼" thick for maximum strength. White powder coat finish with optional official perimeter and target area screened in orange. Goal mount centers 5" x 5".

234A	White/Orange Board	\$562
234	White Board	\$450



## Steel Backboards

72" x 42" or 54" x 39" backboards are designed to withstand rugged play and severe weather conditions. Heavy, 11 gauge steel face has ¼" diameter perforations to minimize wind resistance. Official perimeter and target area are screened on solid steel. Unitized steel support frame has attachment holes on fan backboard mounting centers allowing installation on existing support structures with optional mounting kit. Goal mount centers 5" x 5". Backboard padding is not included but is recommended for player safety.

207	72" x 42" Board	\$1,120
203	54" x 39" Board	\$822



# WALL MOUNT BACKSTOPS



## 219 Up-Fold Series

Backstop folds up with hoisting winch for compact storage of both framework and backboard. Special offset hinge fitting arrangement allows backstop to fold nearly flat against a wall. Backstop extension is available in any dimension from 4' to 12' from the wall.



## 220 Side-Fold Series

Backstop folds to side for economical, compact storage. This style is recommended where low ceiling height or obstructions prohibit other folding methods. Backstop is operational from the floor with a telescoping diagonal brace system with a special locking mechanism. Offset hinge fitting allows backstop to fold nearly flat against a wall. Extension is available in any dimension from 4' to 12' from the wall.



*CALL TODAY  
FOR PRICES*

**RECOMMENDED FOR ALL UP-FOLD WALL MOUNT BACKSTOPS:**  
**10797120** Safety Strap Kit (For Unit Without Height Adjuster)  
**10797121** Safety Strap Kit (For Unit With Height Adjuster)





## 312 Stationary Series

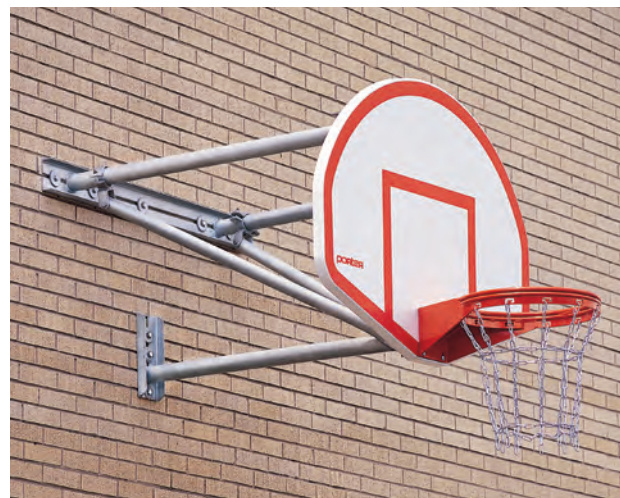
Simple, rigid diagonally braced design supports backboard at any extension from .5' to 12' from the wall. Porter's Center-Strut backstops are designed with a direct-mount system which provides a structural mounting support plate directly behind the goal eliminating any strain on the backboard during aggressive play.



## Column Mount Systems

Designed for mounting a fan-shaped backboard and goal to an exposed straight or sloped column (maximum flange width of 15"). Center-Strut direct goal mount design eliminates any strain on the backboard during aggressive play. Unit includes extension frame with special attachment assemblies and mounting hardware only. Fan backboard and goal separately. Available with Center-Strut manual height adjustment feature which allows goal height settings from 8'-10'. We recommend column padding for player safety.

00310100	Fixed Height System	\$475
00311100	Height Adjuster System	\$1,085



## Outdoor Wall Mount System

Fully welded heavy-duty steel frame is galvanized after fabrication for a finish that's durable enough to last a lifetime! Center-Strut direct goal mount design eliminates any strain on the backboard during aggressive play. Backstop extends 4' from the wall. Unit includes a 234A aluminum backboard and a 00251H00 heavy-duty playground goal with chain net to provide the utmost in durability. Wall mounting bolts and anchors not included.

01312400	\$1,100
----------	---------



# ACCESSORIES



## Pro-Pad Bolt-On Backboard Pads



Featuring self-tapping screws, the Pro-Pad is the easiest backboard pad in the industry to install. The improved 2-hole design is extremely durable and is manufactured with a tough molded urethane skin that is painted in the mold with a color matched urethane paint to provide the exterior with uniform colored appearance. Meets all competition requirements of the NBA, NCAA, NFHS and International requirements of FIBA. **Pads one backboard.**

00326000	Gray	\$225	00326400	Maroon	\$225
00326100	Red	\$225	00326500	Orange	\$225
00326200	Royal Blue	\$225	00326600	Black	\$225
00326210	Navy Blue	\$225	00326700	Purple	\$225
00326300	Kelly Green	\$225	00326800	Yellow Gold	\$225
00326310	Dark Green	\$225	00326220	Light Blue	\$225



## Adhesive Backboard Pads

Pads molded from self-skinning polyurethane foam. Fast-setting adhesive installation. Available in gray only. **Pads one backboard.**

00227000	For 2" Thick Backboards	\$278
00229000	For 1 <sup>9</sup> / <sub>16</sub> " Thick Backboards	\$278



## Recreational Backboard Pads

Pads molded from self-skinning type urethane foam for a tough, UV resistant exterior skin. Two pad sections are self aligning with interlocking joints and molded in an L-shape providing proper drainage for outdoor use. Bolt on installation using steel inserts and special self-drilling, self-tapping type hardware. For indoor or outdoor use. Available in black only. **Pads one backboard.**

00324648	48" Wide Pad	\$175
00324654	54" Wide Pad	\$192
00324672	72" Wide Pad	\$214





## Fair-Court® System

The Fair-Court rim testing system is designed to fairly and accurately measure the rebound performance of the rim and entire support system. This testing is essential in order to begin solving the problem of inconsistent rebound performance found in inferior or worn equipment, to minimize the home court advantage and to improve the integrity of the game of basketball.

System is furnished complete in a compact carrying case to properly transport and store the entire unit. Unit breaks down easily into three sections for compact storage.

**ERTD2003NCAA**    **\$3,350**



## Rebounder Ring

Rebounder ring fits all standard size rims, installation is quick and easy. Three thumb screws keep the ring in place.

**RING002**    **\$36**



## Nylon Nets

**Anti-Whip Net 12 Pack**  
**09608012**    **\$93**

**Anti-Whip Net**  
**09608000**    **\$9 (ea)**

**Residential Nylon Net**  
**NETS00021000**    **\$3 (ea)**



## Chain Net

Zinc-plated for maximum weather resistance and furnished with twelve, extra heavy-duty "S" hooks for attachment to any outdoor rim.

**00161000**    **\$32 (ea)**



## Fan Backboard Mount Kit

Install Porter's fan-shaped backboards to existing indoor or outdoor support structures. Channel type adapters bolt to the cast-in threaded inserts on the backboard (located on 3 5/8" centers) and allow attachment to existing backboard extension with special internal sliding nuts. Adapts to existing fittings with a horizontal bolt hole spacing up to 7 1/4" centers.

**00217000**    **\$197 (4)**



## Net Tube-Tie Cord

Replacement nylon cord for our tube-tie basketball goal system. Includes hardware.

**ROND00123100**    **\$6.25**



## Tamper Proof Goal Hardware

Wards off the most determined theft or vandalism attempts! Set of four round head bolts with special high security nuts using a torque limiting breakaway head section combined with a free turning protective sleeve. For use on any Porter standard front-mount goal. No special tools are required for installation.

**01218000**    **\$44**

# GYM ACCESSORIES



## Ball Carts

- 1" Steel Construction
- Black Powder Coat Finish
- Easy Roll Casters

93818	2 Tier Ball Cart (Holds 18)	\$160
93815	3 Tier Ball Cart (Holds 15)	\$175
93830	3 Tier Double Ball Cart (Holds 30)	\$226
93930	Ball Cage (Holds 30)	\$271



## Seiko Table Top Scoreboard

Scores multiple sports and can be used as a stopwatch countdown timer or pacer. Backside control panel or wireless remote (included) operation. High visibility LED display. Programmable game timer counts up or down from 99:59 with scores for two teams up to 199. Buzzer when timer reaches zero, or can be manually controlled.

83201	Scoreboard	\$1,095
83203	Caster Stand	\$312
83204	Additional Remote	\$59
83202	Carry Bag	\$109



## Seiko Portable Shot Clock

Shot clock meets International Basketball regulations. Includes two display units, controller box, two connection cables and power cable. Features two re-settable preset times and high visibility LED digits at 9.84". Can be set from 1-99 seconds. Buzzer when countdown reaches zero. Small display in the control box.

83205	Shot Clock	\$1,295
83203	Caster Stand	\$312





porter®

## Floor Cover System

- Tough 19 oz Polyester-Reinforced Vinyl
- Meets NFPA 701, UL-214, and CA Fire Marshall Fire Requirements
- 7 Year Warranty Against Defects in Materials/Workmanship On Cover
- Passes ASTM E84: Class A

An economical way to use your gymnasium as a multi-use facility. Protects your floors and helps reduce maintenance and refinishing expenses. The Porter floor cover transport and storage cart provides a quick and easy method to install and remove floor covers over large areas, with only two people.

### 10' Standard Width Vinyl-Coated Floor Cover Fabric

Specify length and color when ordering. 120' max per roll.

**92418XX**      **19 oz Vinyl**      **\$12 / Ln ft**

### Transport/Storage Carts

<b>2404</b>	<b>4 Roller</b>	(max. 40' x 120' / 4,800 ft <sup>2</sup> )	<b>\$1,810</b>
<b>2406</b>	<b>6 Roller</b>	(max. 60' x 120' / 7,200 ft <sup>2</sup> )	<b>\$2,185</b>
<b>2408</b>	<b>8 Roller</b>	(max. 80' x 120' / 9,600 ft <sup>2</sup> )	<b>\$2,645</b>
<b>2410</b>	<b>10 Roller</b>	(max. 100' x 120' / 12,000 ft <sup>2</sup> )	<b>\$3,140</b>
<b>2412</b>	<b>12 Roller</b>	(max. 120' x 120' / 14,400 ft <sup>2</sup> )	<b>\$3,620</b>

Sold Separately

<b>02405000</b>	<b>Power Winder</b>	<b>\$2,415</b>
<b>924040XX</b>	<b>Storage Rack Cover</b>	<b>\$418</b>
<b>02406200</b>	<b>Hand Held Tape Applicator</b>	<b>\$60</b>
<b>02406300</b>	<b>Walk Type Tape Applicator</b>	<b>\$422</b>
<b>02406112</b>	<b>Tape (12 rolls)</b>	<b>\$221</b>



Non-Marking  
Locking Casters



Optional Tape  
Applicators



Standard Hand  
Crank



Hook and Loop  
Attachment System



Optional Storage  
Cover



Optional Power  
Winder

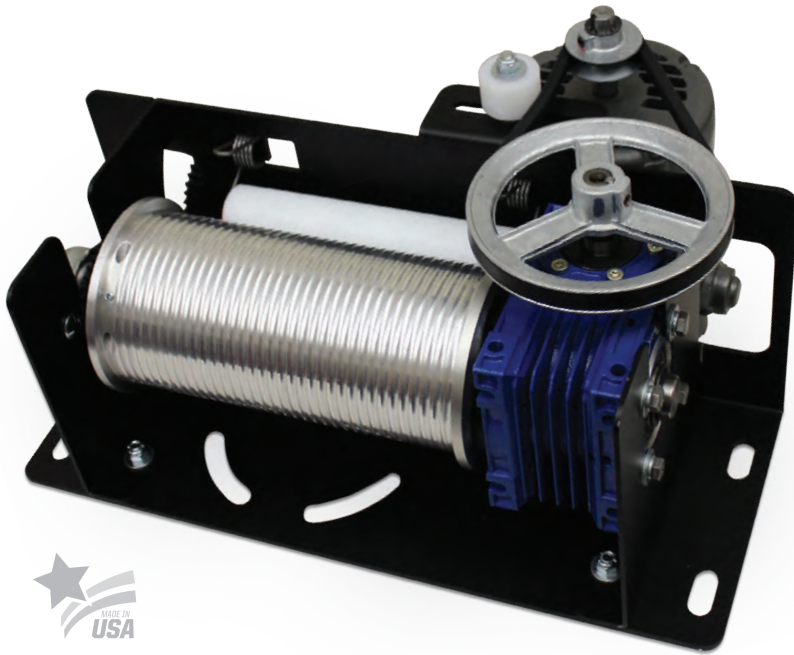
### Vinyl Colors:

<b>01</b> LIGHT BLUE	<b>02</b> ROYAL BLUE	<b>03</b> RED	<b>04</b> WHITE	<b>05</b> ORANGE
<b>06</b> YELLOW GOLD	<b>08</b> TAN	<b>09</b> GRAY	<b>10</b> MAROON	<b>11</b> PURPLE
<b>12</b> BLACK	<b>13</b> NAVY BLUE	<b>14</b> KELLY GREEN	<b>15</b> DARK GREEN	

**When Ordering:** Use the two-digit color number to replace XX in the item number.



# FACILITY EQUIPMENT



## Electric Winch

The (No. 712) ¾ HP and the (No. 713) 1 HP equipment winch motors have been manufactured to Porter's well established requirements for quality and safety with improved operating speed. These newly designed motors continue the Porter reputation for durable, high-quality backstop winches in facilities all over the globe. The 712/713 motors come with many improvements and features including a 4" OD extended machined aluminum cable drum allowing 41 ft. of cable capacity on a single layer, an external belt tensioner for easier adjustments and maintenance, a cable tensioner to keep cable in place during slack conditions, and a 5-year limited warranty.

The 712/713 basketball backstop winches will operate with Porter's 3-position key switch, Powr-Touch® systems, or SportSonic® II wireless control system.



**5 YEAR LIMITED WARRANTY**

712  
713

¾ HP Winch  
1 HP Winch



## Saf-Strap Safety Lock

Any increase in cycle speed or tension, whether sudden or gradual, immediately activates the locking device. The device will lock in any state or cycle, in the event of an over-speed occurrence due to a malfunction of the hoisting apparatus.

Product is suspended from ceiling and attaches to backstop. Additional structure may be required.

797

**5 YEAR LIMITED WARRANTY**



## SportSonic® II

SportSonic® II Transmitter operates up to 99 pieces of equipment effortlessly via remote control. An excellent choice where maneuverability and convenience are desired while operating the gymnasium equipment. Reduces the need for costly wiring and key switches.

1 receiver per backstop is required.

**SportSonic II Transmitter**

**12002100**

**Receiver Kit**

**12002200**



## Key Switch Control

This control system provides separate up and down keys for safe equipment operation. Standard 4½" square flush mounting features a stainless steel cover plate.

1 key switch per backstop is required.

**Key Switch Control**

**XELE00791112**

**Replacement Up/Down Keys**

**ELEC00088001**

## Advanced Installation Required

Items on these two pages (28-29) may require advanced installation by a trained professional. Incorrect installation may result in product failure and/or warranty void. Installation and fees are customer responsibility. Contact your Porter dealer for additional information.





Electric Height Adjuster Shown

## Center-Strut Height Adjusters

A Porter exclusive. Available on the ceiling suspended backstop selection of your choice, along with the option to choose either manual or electric operation. Porter's Limited Lifetime Warranty offered on all Porter backboards installed with a Center-Strut height adjuster. The goal height is easily adjustable to any height from 8' to 10' to accommodate all age levels. Height settings are clearly visible from the floor for accurate adjustments. Electric height adjuster unit incorporates a compact motor to raise and lower the goal height electrically from 8' and 10'.



Optional cordless drill unit allows for power operation of Manual Center-Strut Height Adjuster.

Choose Manual (hand-cranked) Height Adjuster or Powr-Stick (AC operated electric-cranked) Height Adjuster.

### Manual Height Adjusters

00900506  
00900211  
00600506  
00900259  
XCRK90000302  
REPL09009002

Single Drop For Rectangular Boards  
Single Drop For Fan Boards  
Dbl. Drop for Rect. Board  
Portable Drill Operation  
Hand Crank  
Replacement Rod Kit

(For post 1995 installations, for pre 1995 contact your Porter Dealer)



### Powr-Stick Operated Electric Height Adjusters

00902506  
00902211  
00602506  
00902000

Single Drop For Rectangular Boards  
Single Drop For Fan Boards  
Dbl. Drop for Rect. Board  
Powr-Stick Pole (1 Required)



00269000  
WINH00048000

## Electric Winch Operator

Compact, heavy-duty unit to operate Porter's manual winch or any winch with a 3/4" square drive shaft. Sufficient power and torque to handle folding backstops up to a 25' attachment height. Double insulated with 50' power cord and two-prong plug. No grounding required. Complete with a durable storage case.

Electric Winch Operator  
Chuck



00700000  
XCRK70000002  
REPL10700000  
XPAD2100260B

## Manual Winch

Compact winch with precision-machined, hardened steel worm, forged bronze worm wheel and thrust ball bearing provides smooth, quiet operation and holds backstop in any position. Hand crank sold separately.

Manual Winch  
Hand Crank  
Gear Replacement Kit  
Wood Pad

# GOOSENECK SYSTEMS

USE THE MATRIX TO CHOOSE YOUR EXTENSION DISTANCE, POLE DIAMETER, BACKBOARD, AND GOAL



**10** YEAR LIMITED WARRANTY

4' Extension 4½" Diameter Pole		00235000 Super Goal	00202H00 Double Rim	00251H00 Heavy-Duty	236H00 Powr-Flex Competition
267 Fan Fiberglass		\$774 17412	\$793 17413	\$853 17414	\$934 17415
234 Fan Aluminum White		\$883 17422	\$915 17423	\$925 17424	\$961 17425
234A Fan Aluminum		\$903 17432	\$915 17433	\$961 17434	\$1,110 17435



Discover Our  
Most Popular  
Combinations

5' Extension 4½" Diameter Pole					
267 Fan Fiberglass		\$1,010 17512	\$1,030 17513	\$1,095 17514	\$1,170 17515
234 Fan Aluminum White		\$1,035 17522	\$1,055 17523	\$1,115 17524	\$1,195 17525
234A Fan Aluminum		\$1,040 17532	\$1,065 17533	\$1,125 17534	\$1,205 17535
216 72" x 42" Fiberglass		\$1,215 17582	\$1,240 17583	\$1,295 17584	\$1,380 17585

## Super Duty System

Provides the utmost in safety and strength during even the toughest play. California and Florida specifications require extended pole length for a 2' deeper footing.

00251H00  
Heavy-Duty

236H00  
Powr-Flex  
Competition

6' Extension 5 <sup>9</sup> / <sub>16</sub> " Diameter Pole							
267 Fan Fiberglass		\$1,895 17612	\$1,865 17613	\$1,895 17614	\$1,980 17615		
234 Fan Aluminum White		\$1,835 17622	\$1,845 17623	\$1,905 17624	\$1,985 17625		
234A Fan Aluminum		\$1,845 17632	\$1,860 17633	\$1,920 17634	\$2,000 17635	\$2,635 176FLSD340	\$2,665 176FLSD350
207 72" x 42" Steel		\$1,985 17652	\$2,000 17653	\$2,060 17654	\$2,135 17655	\$2,955 176FLSD540	\$2,990 176FLSD550
205A 72" x 42" Glass		\$2,010 17662	\$2,020 17663	\$2,080 17664	\$2,160 17665	\$2,750 176FLSD640	\$2,780 176FLSD650
216 72" x 42" Fiberglass		\$2,025 17682	\$2,050 17683	\$2,105 17684	\$2,175 17685		





## Custom Powder Coat

**When Ordering:** Add "C" followed by the 2-digit color number to the end of the item number.

Ex: 17634C12 (shown above)

\*Not available for Super Duty Systems

01 LIGHT BLUE	02 ROYAL BLUE	03 RED	04 WHITE	05 ORANGE	06 YELLOW GOLD	07 SILVER	08 OLD GOLD	09 GRAY
10 MAROON	11 PURPLE	12 BLACK	13 NAVY BLUE	14 KELLY GREEN	15 DARK GREEN	22 ARCH BLACK	23 ARCH GRAY	



# VERTICAL POST SYSTEMS

USE THE MATRIX TO CHOOSE YOUR EXTENSION DISTANCE, POLE DIAMETER, BACKBOARD, AND GOAL



**10** YEAR LIMITED WARRANTY

## Super Duty System

Provides the utmost in safety and strength during even the toughest play. California and Florida specifications require extended pole length for a 2' deeper footing.

4' Extension 4½" Diameter Pole		00235000 Super Goal	00202H00 Double Rim	00251H00 Heavy-Duty	236H00 Powr-Flex Competition		00251H00 Heavy-Duty	236H00 Power-Flex Competition
267 Fan Fiberglass		\$1,100 16412	\$1,145 16413	\$1,190 16414	\$1,220 16415			
234 Fan Aluminum White		\$1,255 16422	\$1,310 16423	\$1,350 16424	\$1,385 16425			
234A Fan Aluminum		\$1,320 16432	\$1,365 16433	\$1,405 16434	\$1,445 16435	\$1,930 164FLSD340	\$1,965 164FLSD350	
216 72" x 42" Fiberglass		\$1,375 16482	\$1,365 16483	\$1,405 16484	\$1,445 16485			

6' Extension 5⅞" Diameter Pole								
267 Fan Fiberglass		\$1,500 16612	\$1,540 16613	\$1,585 16614	\$1,685 16615			
234 Fan Aluminum White		\$1,725 16622	\$1,770 16623	\$1,810 16624	\$1,850 16625			
234A Fan Aluminum		\$1,790 16632	\$1,835 16633	\$1,885 16634	\$1,920 16635			
207 72" x 42" Steel		\$2,130 16652	\$2,175 16653	\$2,220 16654	\$2,250 16655	\$2,745 166FLSD540	\$2,775 166FLSD550	
205A 72" x 42" Glass		\$1,910 16662	\$1,950 16663	\$2,000 16664	\$2,030 16665	\$2,520 166FLSD640	\$2,555 166FLSD650	
216 72" x 42" Fiberglass		\$1,850 16682	\$1,895 16683	\$1,940 16684	\$1,975 16685			



Vertical Post Systems Are Also Available in Back-To-Back Configurations. Call For Pricing & Details.



## Custom Powder Coat

When Ordering: Add "C" followed by the 2-digit color number to the end of the item number. Ex: **16654C01**

*\*Not available for Super Duty Systems*

01 LIGHT BLUE	02 ROYAL BLUE	03 RED	04 WHITE	05 ORANGE	06 YELLOW GOLD	07 SILVER	08 OLD GOLD	09 GRAY
10 MAROON	11 PURPLE	12 BLACK	13 NAVY BLUE	14 KELLY GREEN	15 DARK GREEN	22 ARCH BLACK	23 ARCH GRAY	



# ADJUSTABLE SYSTEMS



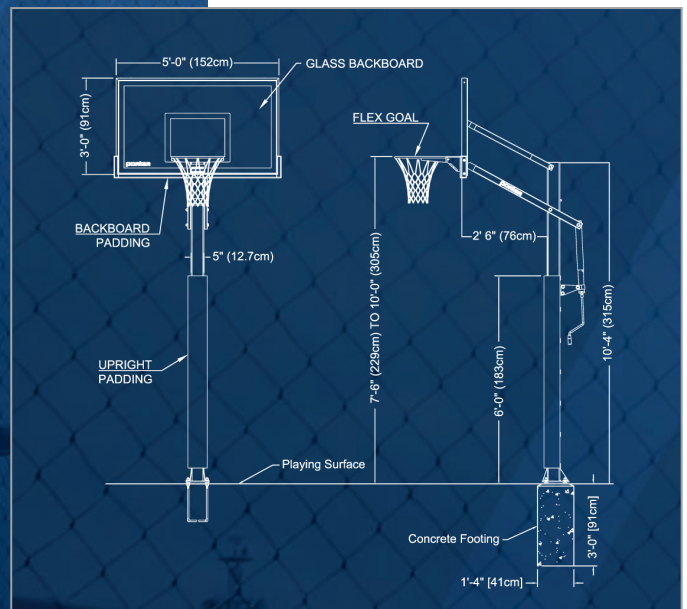
## Big Shot® Collegiate System

Features a 5" upright post anchored into the ground utilizing an anchor bolt system. The 60" x 36" glass backboard includes official white perimeter and target area markings silk screened on the backside to prevent wear. The system features 2.5' extension arms and can be set at any playing height from 7.5' to 10'. System is assembled using zinc plated hardware. Includes the flex goal, a moveable rim that protects players and equipment during slam-dunks with a concealed shock absorber.

*Includes 60" x 36" glass backboard, goal, nylon net, post pad, backboard pad, & mounting hardware.*

**9571 Collegiate Package \$1,515**

**95708 Replacement 5" Pole Pad \$314**







porter®

## Big Shot® Pro System

Features a rugged 6" upright post anchored into the ground utilizing an anchor bolt system. The 72" x 42" clear-view backboard features ½" glass and comes standard with edge padding. Official white perimeter and target area markings are silk screened on the backside to prevent wear. The extension arms offer 4' of clearance for player safety and allow the backboard to be set at any playing height from 5.5' to 10'. System is assembled using premium stainless steel hardware. Includes the Powr-Flex Competition goal, a moveable rim that protects players and equipment during slam-dunks with a concealed shock absorber.

*Includes 72" x 42" glass backboard, goal, nylon net, post pad, backboard pad, & mounting hardware.*

**9572 Pro Package \$2,205**

**95758 Replacement 6" Pole Pad \$359**



# OUTDOOR SYSTEMS



## Heavy-Duty System

Heavy-duty support structure provides tremendous strength and is designed to withstand the most rugged playing conditions. Backstop provides a 5' extension into the playing court for maximum safety. Available as a single post or a back-to-back system when a multiple court layout is desired. Unconditional Lifetime Warranty is provided on the most rugged outdoor goal available. Great system for regulation outdoor competitions.

Official size 72" x 42" perforated backboard is 11 gauge steel with a massive rear support framework. Backboard is screened with official perimeter and target area markings. Backboard, goal and pole have an extremely durable powder coated finish.

195580	Standard System	\$3,140
195582	Back-to-Back System	\$5,055
95758	Pole Pad	\$359
00324672	Backboard Pad	\$214



**UNCONDITIONAL** LIFETIME WARRANTY



Shown in Navy Blue Powder Coat.

## Ultimate Outdoor System

Turn any outdoor court into an official arena! Includes 6' vertical pole, 72" x 42" Center-Strut glass backboard, 240180 Torq-Flex Competition, and anti-whip net.

*Pole pad and backboard pad not included but recommended for player safety.*

16675CXX \$2,570



**10** YEAR LIMITED WARRANTY

### Ultimate Outdoor Powder Coat Colors:

01 LIGHT BLUE	02 ROYAL BLUE	03 RED	04 WHITE	05 ORANGE	06 YELLOW GOLD	07 SILVER	08 OLD GOLD
09 GRAY	10 MAROON	11 PURPLE	12 BLACK	13 NAVY BLUE	14 KELLY GREEN	15 DARK GREEN	22 ARCH BLACK
							23 ARCH GRAY

**When Ordering:** Use the 2-digit color number to replace XX in the item number.





## Rock Solid System

Built to withstand the elements and the occasional natural disaster! This custom model meets Florida's hurricane wind load standards and is as heavy duty as they come featuring an extra large schedule 80 (4½") gooseneck pole.

*Includes schedule 80 gooseneck pole, 234A aluminum fan backboard, 00251H00 heavy-duty playground goal, and chain net.*

**175340FL**    \$3,270



## Championship System

Rigid feel and authentic rebound characteristics make this unit the best value in home basketball systems. 4" square pole has extension arm and sway braces to enhance unit stability. The direct goal mount provides superior strength and rigidity to the 48" x 36" acrylic backboard.

*Includes backboard system, goal, nylon net, & mounting hardware.*

<b>092320FG</b>	<b>System</b>	<b>\$1,085</b>
<b>00324648</b>	<b>Backboard Pad</b>	<b>\$175</b>



## Court Stencil Kit

Stencil kit provides ease of painting official court lines on asphalt or other surfaces in only minutes. Stencil sections are easily taped in place while paint is applied through the stencil holes using a roller provided with kit. Paint not included.

**01209000**    **\$51**



## 6' Pole Pads

**Lace-Up Pad:** 1½" thick polyurethane foam pad is 6' tall and fits 3½"-4½" pole diameters. 15 oz vinyl cover available in 14 colors. Lace closure.

<b>000690XX</b>	Lace-Up Pad	<b>\$266</b>
<b>000690XXSP</b>	Lace-Up Pad with Graphics	<b>\$317</b>

**Deluxe Pad:** 4" thick polyurethane foam pad is 6' tall and fits 4½"-5⅝" pole diameters. 15 oz vinyl cover available in 14 colors. Hook and loop closure.

<b>001870XX</b>	Hook-And-Loop Closure Pad	<b>\$493</b>
<b>001870XXSP</b>	Hook-And-Loop Closure Pad with Graphics	<b>\$562</b>



**CUSTOM GRAPHICS AVAILABLE**

*See page 43 for vinyl color chart*



# TRAINING & CONDITIONING



## Soft Plyoboxes

Less intimidating than steel boxes for the developing athlete. Standard 28"x 28" blocks. 3" block is built with 2.2# density polyethylene foam, other sizes with 1.8# which provides stability, shock attenuation, and performance. Boxes are secured for stacking with industrial strength hook and loop fastener. Durable vinyl cover. All boxes are less than 28 lb. and have two reinforced handles for portability.

TA203	3" Box	\$122	TA218	18" Box	\$334
TA206	6" Box	\$166	TA224	24" Box	\$410
TA212	12" Box	\$239	TA225	Set of 5	\$1,235



## Steel Plyoboxes

Constructed of sturdy and durable 1" square steel tubing and anti-skid rubber top platform, steel plyoboxes are a great way for athletes to improve leg power, speed, and strength. Easily stack with tapered leg design.

(Mat not included).

TA3060	6" Box	\$113	TA330	30" Box	\$170
TA312	12" Box	\$127	TA336	36" Box	\$184
TA318	18" Box	\$142	TA342	42" Box	\$197
TA324	24" Box	\$155			

TA301 Set of 4 \$577  
Includes 12", 18", 24", and 30" boxes

TA300 Set of 6 \$946  
Includes 12", 18", 24", 30", 36" and 42"



## Electronic Vertical Jump Tester

State-of-the-art design measures from 7' To 12' in ½" increments, light-up digital display immediately shows the exact jump height and downloadable data.

TA199C12 \$2,925



## Agility Dots

Easy to use dots ideal for hard surfaces like gymnasium floors. Create patterns for challenging footwork. Easy to see bright colors. Set of 6.

TA1694 \$30



## Dot Drill Mat

Every athlete can benefit by doing agility drills using this Dot Drill Mat. The Dot Drill Mat measures 3' x 4' x 3/8" with five integrated rubber dots.

TA1425 \$104



## Agility Poles

Excellent for marking agility courses and drills. 5' tall poles force players to maintain optimum posture during exercises. New bases can be filled with sand for extra stability. Includes 4 bases and 4 poles.

TA1850 \$102



## Agility Ladder

Footwork training for advanced speed, balance, and coordination. Composed of 7'6" ladder sections to determine length. Easily connects with other ladders. Nylon webbing with durable flat poly slats. Includes carry bag.

TA1681 30' Ladder \$95



## Mini Bands

2" Wide x 13" Long Bands. Perfect for warm-ups, drills, and strengthening hip muscles. 10 bands per pack.

TA1741L	Light Resistance	\$34
TA1741M	Medium Resistance	\$43
TA1741H	Heavy Resistance	\$48

# TRAINING & CONDITIONING



## PowerMax® Rubber Medicine Balls

Synthetic rubber ball suitable for all sports. Perfect for bounce drills. Can be used indoor and outdoor. Color coded for easy weight identification.

TA106	Purple 1K (2.2 lb), 6.5" diameter	\$27
TA108	Yellow 2K (4.4 lb), 7.5" diameter	\$34
TA109	Green 3K (6.6 lb), 9.5" diameter	\$40
TA110	Red 4K (8.8 lb), 9.5" diameter	\$49
TA111	Blue 5K (11 lb), 10.5" diameter	\$56
TA112	Orange 6K (13.2 lb), 11" diameter	\$61
TA131	Gray 7K (15.4 lb), 11" diameter	\$74
TA132	Black 8K (17.6 lb), 12" diameter	\$86



## Stability Balls

Excellent for balance, abdominal work and stretching. Each ball is fabricated from the finest vinyl designed to support 500 lbs of weight. Ball size used according to athlete's height. Shipped deflated.

TA1805	55cm 5'-5'8"	\$32
TA1806	65cm 5'8"-6'2"	\$35
TA1807	75cm 6'2"+	\$39



## PowerMax® V2 Medicine Balls

All balls are 14" in diameter, impact absorbing, and moisture resistant with an 18 oz. flexible polyurethane shell textured for grip. The hand-sewn casing design and expert ball construction ensure that the implement remains dimensionally stable, balanced, and maintains the impact absorbing properties. One year warranty.

TA1362	6 lb	\$87
TA1363	8 lb	\$92
TA1364	10 lb	\$98
TA1365	12 lb	\$106
TA1366	14 lb	\$111
TA1367	16 lb	\$117
TA1368	18 lb	\$122
TA1369	20 lb	\$128



## Speed Ropes

Speed ropes have a stainless steel cable encased in plastic for maximum speed. They feature ball bearings at handles and are fixed lengths. All ropes come with a carry bag for easy storage.

TA128	9' Speed Rope	\$18
TA1281	10' Speed Rope	\$20





## Push/Pull Sled

US made 11 gauge steel frame sled features a space-saving design that is less than 7" high when folded, replaceable/removable runners for use on a variety of surfaces, and quick release pins for fast set-up and breakdown. The versatile sled accommodates all sizes of athletes with adjustable width push posts (12-21"W x 32"H) and multiple push/pull options.

Sled holds up to 360lb on a 15" long x 2" diameter post that can fit four 45lb bumper plates or eight traditional steel 45lb plates. The sled can be used without the posts to provide different loading applications.

*Sled includes leads and a harness.*

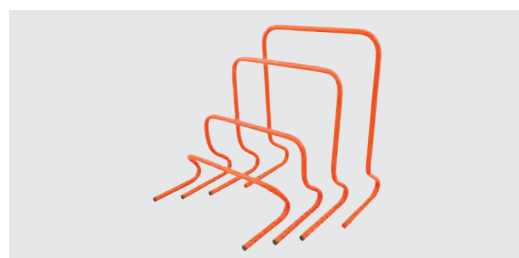
**TA155** **\$506**



## Power Pad

Sprint, jump, hop and rehab, all within the confines of the low-impact, energy-absorbing Power Pad which magnifies the intensity of any upright exercise. 48"L x 48"W x 24"H

**TA194** **\$870**



## Step Hurdles

Improves knee lift and step quickness. Use with forward and lateral drills. Constructed of durable PVC tubing. 18" width. Lightweight for easy carrying and storage.

<b>TA167</b>	<b>6" Hurdle</b>	<b>\$13</b>
<b>TA166</b>	<b>12" Hurdle</b>	<b>\$14</b>
<b>TA16618</b>	<b>18" Hurdle</b>	<b>\$19</b>
<b>TA16624</b>	<b>24" Hurdle</b>	<b>\$22</b>



## Reflex Ball

Specially designed ball to improve reaction time and eye-hand coordination. Non-marking rubber provides unpredictable bounce.

**TA144** **Reflex Ball** **\$9.50**



## Therapy Rollers

Roll across the target area to relieve muscle soreness or tightness.

<b>TA1835</b>	<b>13" Trigger Point Grid Roller</b>	<b>\$50</b>
<b>TA1826</b>	<b>2-In-1 Foam Roller (Shown)</b>	<b>\$50</b>
<b>TA3620</b>	<b>Standard Foam Roller</b>	<b>\$37</b>



## Stretch Out Strap

Eight 8" handles provide for a variety of stretches. Length: 62" Width: 4" Thickness: .5"

**TA1781** **62" Stretch Out Strap** **\$6.50**

# SPECIALTY PADS



DURA  
SAFE



FIRE  
SAFE



SUPER  
SAFE



## CONFIGURED COLUMN AND CORNER PADS

Pads configured to your specified dimensions for a custom fit on exposed wall corners or columns. Rigid backed pads are 2" polyethylene foam bonded to 7/16" wood board and covered in 19 oz vinyl. Sewn pads are 2" polyethylene foam covered in 15 oz vinyl. Available in 14 colors. 1" nailing margins on top and bottom for ease of installation. DuraSafe and SuperSafe pads meet ASTM F2440 impact protection. FireSafe and SuperSafe pads entire assembly is ASTM E-84 Class "A" fire rated and tested in accordance to meet IBC and NFPA 101 code requirement.

### 2 Sided Pads

2'x6' or less; worksheet required

90216026XX	2' x 6' DuraSafe™ Sewn	\$314
90206026XX	2' x 6' DuraSafe™ Rigid Backed	\$162
90208026XX	2' x 6' FireSafe™ Rigid Backed	\$255
90207026XX	2' x 6' SuperSafe™ Rigid Backed	\$336

4'x8' or less; worksheet required

90216048XX	4' x 8' DuraSafe™ Sewn	\$429
90206048XX	4' x 8' DuraSafe™ Rigid Backed	\$267
90208048XX	4' x 8' FireSafe™ Rigid Backed	\$602
90207048XX	4' x 8' SuperSafe™ Rigid Backed	\$857

### 3 Sided Pads

4'x8' or less; worksheet required

90316048XX	DuraSafe™ Sewn	\$519
90306048XX	DuraSafe™ Rigid Backed	\$285
90308048XX	FireSafe™ Rigid Backed	\$621
90307048XX	SuperSafe™ Rigid Backed	\$812



Wall and Panel  
Attachments



Wall and Channel  
Attachments

## Wall Pad Mounting Clips

An attractive, convenient alternative to permanently attaching wall pads that will provide your facility with a clean, neat appearance. The Z-Clip securely locks wall panels in place and allows worn pads to be easily removed for repair or replacement.

347100  
347200  
347300

Z-Clip Wall Attachment, 6'	\$13
Z-Clip Panel Attachment, 1'10"	\$6.50
Z-Clip Channel Attachment, 6'	\$37





## "I" Beam Pad

6' tall pad with 2" polyethylene foam covered in 15 oz vinyl. Available in 14 colors. Attaches with hook and loop strips.

3560XX	6"-8" Wide Beams	\$475
3562XX	8"-10" Wide Beams	\$475
3563XX	10"-12" Wide Beams	\$487



## Molded Inserts

The perfect solution when cutouts are required for electrical outlets and switches. Inserts fit through field cutouts and are stapled in place on the backside of the pad. Inserts are molded in a flame-retardant rubber and accommodate pad thickness of 2-3". Available in two sizes to fit single-gang and double-gang electrical boxes.

Patent No. 6,769,562

Gray

343001	Single-Gang Gray	\$24
344001	Double-Gang Gray	\$24

Graphite

343101	Single-Gang Graphite	\$24
344101	Double-Gang Graphite	\$24

Vinyl Colors:

01	02	03	04	05	06	08	09	10	11	12	13	14	15
LIGHT BLUE	ROYAL BLUE	RED	WHITE	ORANGE	YELLOW GOLD	TAN	GRAY	MAROON	PURPLE	BLACK	NAVY BLUE	KELLY GREEN	DARK GREEN

**When Ordering:** Use the 2-digit color number to replace XX in the item number.



## Wall Pad Sleeve

Custom wall pad sleeve kits provide a finished appearance in wall pad installations when cutouts around large fixtures are necessary. Sleeve kits are easily installed through field cutouts in panels and are secured with staples on the backside of the pad. Sleeves are molded in a flame-retardant rubber. One kit includes four corner pieces and two 4' long side rails. Side rails may be cut to size in field to fit custom cutout applications. Insert kit fits all 2" thick Porter wall pads. Patent No. US10392815B1

Gray

90343001 \$106



## Stage Pads

Pads configured to your specified dimensions for a custom fit. Panels are supplied in easily removable sections allowing easy set up and removal for stage activities or to access storage. Rigid-Backed pads are 2" polyurethane foam bonded to 7/16" wood board and covered with 19 oz vinyl. Sewn pads are polyethylene foam and are covered with 15 oz vinyl. Available in 14 stock colors.



CUSTOM GRAPHICS AVAILABLE

960550XX  
960550XXSP

Sewn Pad  
Sewn Pad With Graphics

\$271 (ea)  
\$385 (ea)

960560XX  
960560XXSP

DuraSafe™ Rigid Backed Pad  
DuraSafe™ Rigid Backed Pad With Graphics

\$185 (ea)  
\$297 (ea)

960570XX  
960570XXSP

SuperSafe™ Rigid Backed Pad  
SuperSafe™ Rigid Backed Pad With Graphics

\$464 (ea)  
\$582 (ea)

960575XX  
960575XXSP

FireSafe™ Rigid Backed Pad  
FireSafe™ Rigid Backed Pad With Graphics

\$356 (ea)  
\$472 (ea)

### Storage Strip

1½" wide rigid hook and loop strip is encased in a 4' long anodized aluminum strip for ease of mounting.

14444 \$81 (ea)

# WALL PADS



All Porter Wall Pads feature:  **5** YEAR LIMITED WARRANTY

- Pads Available With ASTM F2440 Impact Protection And/Or ASTM NFPA 286 Certification
- Foam Bonded To  $\frac{7}{16}$ " Oriented Strand Board (OSB)
- Entire Pad Covered In Heavy 19oz Vinyl
- Vinyl has a 100PSI Tensile Strength With Leather-like Finish
- Custom Graphic Printing And 14 Vinyl Colors Available
- Mildew And Rot Resistant
- Custom Sizes Available, Call For More Details



CUSTOM GRAPHICS AVAILABLE

Custom Graphics Add SP to end of item # \$107 (per pad)



Vinyl Colors:

01	02	03	04	05	06	08	09	10	11	12	13	14	15
LIGHT BLUE	ROYAL BLUE	RED	WHITE	ORANGE	YELLOW GOLD	TAN	GRAY	MAROON	PURPLE	BLACK	NAVY BLUE	KELLY GREEN	DARK GREEN

When Ordering: Use the 2-digit color number to replace XX in the item number.





DURA  
SAFE



FIRE  
SAFE



SUPER  
SAFE



CUSTOM  
GRAPHICS

# PAD FEATURES

Custom Graphics Add SP to end of item # \$107 (per pad)



5 YEAR LIMITED WARRANTY

## DuraSafe™ Pads

Meets or exceeds impact standards.



- Meets ASTM F2440 Impact Protection Standard

### Stock Pads

#### 2" Foam (Each)

5601XX	2' x 6' (No Margins)	\$102
5600XX	2' x 6' (Nailing Margins)	\$102
560281XX	2' x 8' (No Margins)	\$140
560280XX	2' x 8' (Nailing Margins)	\$140

#### 3" Foam (Each)

5611XX	2' x 6' (No Margins)	\$151
5610XX	2' x 6' (Nailing Margins)	\$151

### Configured Pads

#### 2" Foam (Each)

9056026XX	2' x 6' or less	\$149
9056028XX	2' x 6' to 2' x 8' Custom	\$188
9056038XX	2' x 8' to 3' x 8' Custom	\$321
9056048XX	3' x 8' to 4' x 8' Custom	\$327

#### 3" Foam (Each)

9056126XX	2' x 6' or less	\$156
9056128XX	2' x 6' to 2' x 8' Custom	\$174
9056138XX	2' x 8' to 3' x 8' Custom	\$323
9056148XX	3' x 8' to 4' x 8' Custom	\$342



5 YEAR LIMITED WARRANTY

## FireSafe™ Pads

Meets or exceeds fire codes.



- Entire Pad Assembly is ASTM E-84 Class "A" Fire Rated
- Tested in accordance with NFPA 286 to meet IBC and NFPA 101 code requirements

### Stock Pads

#### 2" Foam (Each)

5751XX	2' x 6' (No Margins)	\$186
5750XX	2' x 6' (Nailing Margins)	\$186
575281XX	2' x 8' (No Margins)	\$247
575280XX	2' x 8' (Nailing Margins)	\$247

#### 3" Foam (Each)

5761XX	2' x 6' (No Margins)	\$302
5760XX	2' x 6' (Nailing Margins)	\$302

### Configured Pads

#### 2" Foam (Each)

9057526XX	2' x 6' or less	\$249
9057528XX	2' x 6' to 2' x 8' Custom	\$319
9057538XX	2' x 8' to 3' x 8' Custom	\$532
9057548XX	3' x 8' to 4' x 8' Custom	\$619

#### 3" Foam (Each)

9057626XX	2' x 6' or less	\$376
9057628XX	2' x 6' to 2' x 8' Custom	\$389
9057638XX	2' x 8' to 3' x 8' Custom	\$590
9057648XX	3' x 8' to 4' x 8' Custom	\$698



5 YEAR LIMITED WARRANTY

## SuperSafe™ Pads

Meets or exceeds impact & fire codes.



- Meets ASTM F2440 Impact Protection Standard
- Entire Pad Assembly is ASTM E-84 Class "A" Fire Rated
- Tested in accordance with NFPA 286 to meet IBC and NFPA 101 code requirements

### Stock Pads

#### 2" Foam (Each)

5701XX	2' x 6' (No Margins)	\$243
5700XX	2' x 6' (Nailing Margins)	\$243
570281XX	2' x 8' (No Margins)	\$348
570280XX	2' x 8' (Nailing Margins)	\$348

#### 3" Foam (Each)

5721XX	2' x 6' (No Margins)	\$372
5720XX	2' x 6' (Nailing Margins)	\$372

### Configured Pads

#### 2" Foam (Each)

9057026XX	2' x 6' or less	\$297
9057028XX	2' x 6' to 2' x 8' Custom	\$349
9057038XX	2' x 8' to 3' x 8' Custom	\$646
9057048XX	3' x 8' to 4' x 8' Custom	\$765

#### 3" Foam (Each)

9057226XX	2' x 6' or less	\$458
9057228XX	2' x 6' to 2' x 8' Custom	\$510
9057238XX	2' x 8' to 3' x 8' Custom	\$839
9057248XX	3' x 8' to 4' x 8' Custom	\$996

**porter**

PORTERATHLETIC.COM | 888.277.7778  
601 MERCURY DRIVE | CHAMPAIGN, IL. 61822

PRESORTED STD  
U.S. Postage  
**PAID**  
LITANIA SPORTS  
GROUP

# 2021 BASKETBALL

EQUIPMENT COLLECTION

# porter®

**GOALS / BACKBOARDS / PORTABLES / WALL PADS**

**PORTERATHLETIC.COM 888.277.7778**  
601 MERCURY DRIVE | CHAMPAIGN, IL 61822 SALES@PORTERATHLETIC.COM

Prefer an E-Catalog instead? To unsubscribe from future mailings visit [www.litaniasports.com/unsubscribe](http://www.litaniasports.com/unsubscribe)